



PETRO POWER SYSTEM

Creating Systems to Control, Power & Integrate Your Business

The **CPI Petro Power System** is designed and manufactured by CPI to supply our customers with a cost effective, quality, easy-to-install fueling controls solution that complies with paragraph 514-6 of the National Electric Code and a lighting controls solution in a single enclosure. Paragraph 514-6 states that “..each dispensing device shall be provided with a means to remove all external voltage sources, including feedback, during periods of maintenance and service of the dispensing equipment.” The **CPI Petro Power System** combines complete power isolation with complete lighting control.

Standard System Includes:

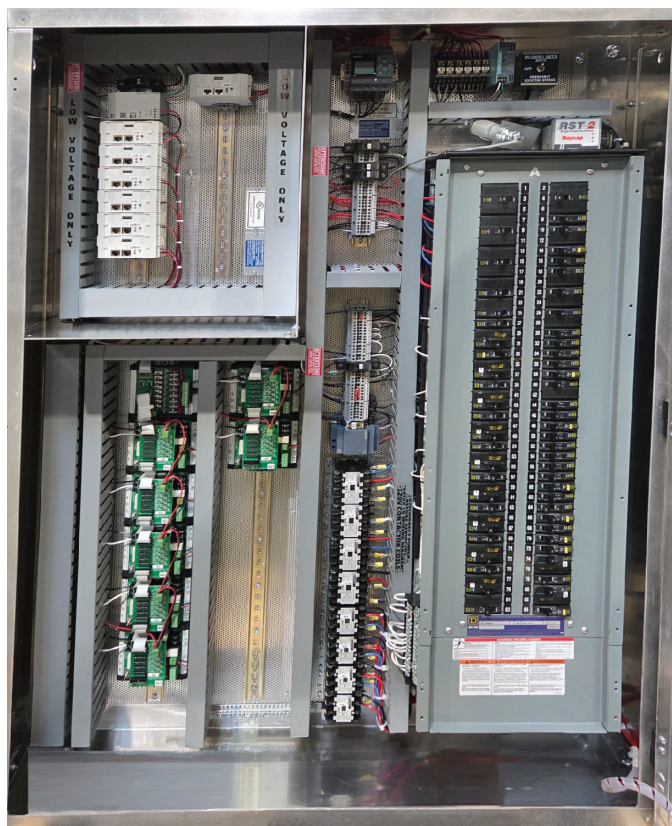
- Fueling Emergency Stop Pushbutton
- Fueling Reset Pushbutton
- Submersible Pump Status Lights
- Dispenser Power Contactors
- Dispenser Isolation System
- Dispenser Maintenance Switches
- Submersible Pump Power Contactors
- Lighting Controller
- Individual, Illuminated Zone Override Pushbuttons
- Interface Terminal Strips
- Electrical Panelboards

System Standards:

- Complete system is UL Listed
- Meets or exceeds NEC requirements
- Lighting controller is Certified with the California Energy Commission

Electrical Requirements:

- 120V, 15A Supply Circuit
- 30A Standard Contactor Switching
- Capacity (higher capacities available upon request)

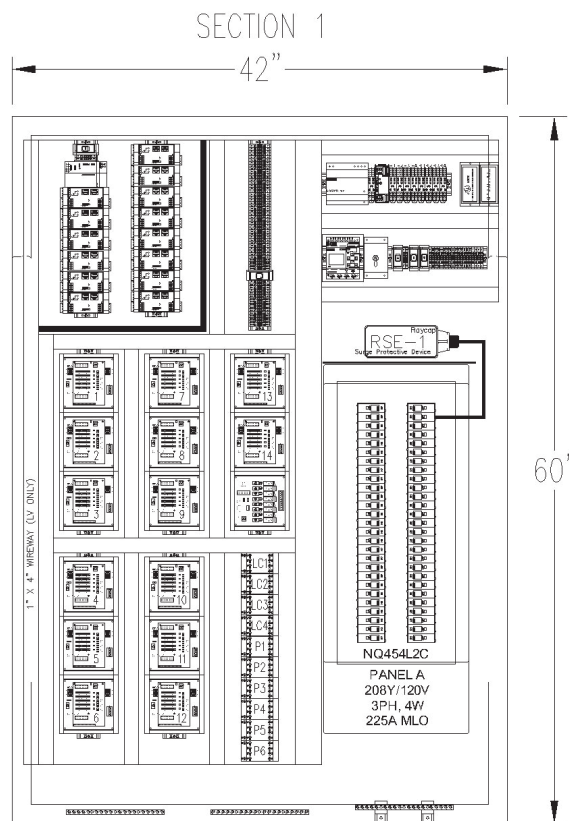


PETRO POWER SYSTEM

MODEL #	DESCRIPTION (TYPE OF FUELING SYSTEM)	CAPACITY	
		PUMPS	MPD'S
PPS-4D-4P-24L	CONTROL FOR 4 DISPENSERS AND 4 PRODUCTS	4	4
PPS-6D-4P-24L	CONTROL FOR 6 DISPENSERS AND 4 PRODUCTS	4	6
PPS-8D-4P-24L	CONTROL FOR 8 DISPENSERS AND 4 PRODUCTS	4	8

(All PPS Systems include an Electrical Panelboard, (4) Zones & (24) Circuits of Lighting Control)

To place an order for a CPI Petro Power System simply call or email CPI with the model number, quantity desired, purchase order number and the ship to address and CPI will do the rest.



**CALL TODAY AND LET CPI BUILD A SYSTEM TO CONTROL,
POWER, & INTEGRATE YOUR BUSINESS**