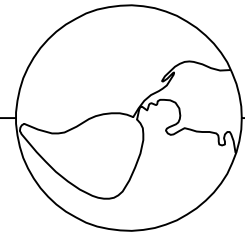
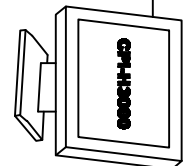


MULTI-SITE ACCESS SUPERVISOR STATION (OPTIONAL LINE ITEM)

REMOTE ACCESS



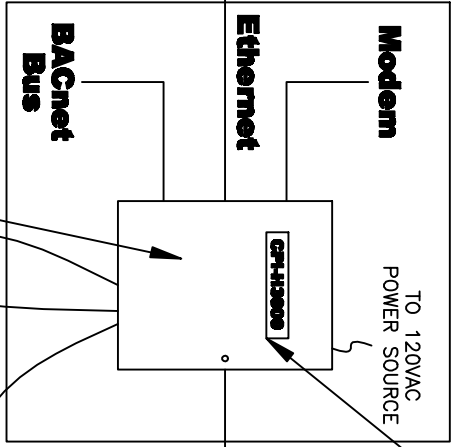
INTERNET



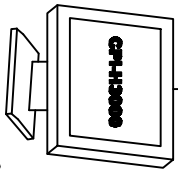
INSTALL CPI-H3000 BUILDING AUTOMATION CONTROLLER IN A LOCATION THAT ALLOWS CLEARANCE FOR WIRING, SERVICING, AND MODULE REMOVAL.

STANDARD CPI SYSTEM

STORE LEVEL



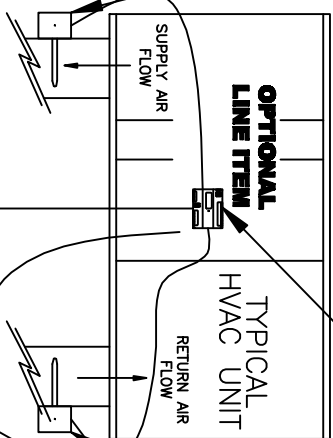
WEB BROWSER WORKSTATION



CPI-H3000 BUILDING AUTOMATION CONTROLLER IS AN OPEN PROTOCOL SYSTEM THAT IS FULLY PROGRAMMABLE. IT COMES FACTORY DEFAULT WITH LONWORK, BACNET, AND ETHERNET.

INSTALL OUTDOOR TEMPERATURE SENSOR ON NORTH SIDE OF BUILDING OUT OF DIRECT SUNLIGHT WITH SENSOR PROBE POINTING DOWN.

INSTALL DUCT SENSOR AFTER LAST HEATING/COOLING SOURCE TO MEASURE THE DISCHARGE AIR TEMP.



INSTALL HVAC CONTROL MODULE INSIDE HVAC UNIT NEAR THE EXISTING HVAC CONTROL BOARDS. WIRE HVAC 24VAC POWER, COOLING, HEATING, FAN, AND DEHUMIDIFICATION (IF USED) FROM UNIT CONTROL BOARD TO CPI HVAC CONTROL MODULE.

INSTALL DUCT SENSOR IN THE RETURN AIR DUCT

INSTALL TEMPERATURE/HUMIDITY SENSOR ON AN INSIDE WALL APPROXIMATELY 54 in. FROM THE FLOOR TO ALLOW EXPOSURE TO THE AVERAGE ZONE TEMPERATURE.

INSTALL TEMPERATURE SENSOR NEAR EXISTING T-STAT CONTROLS.

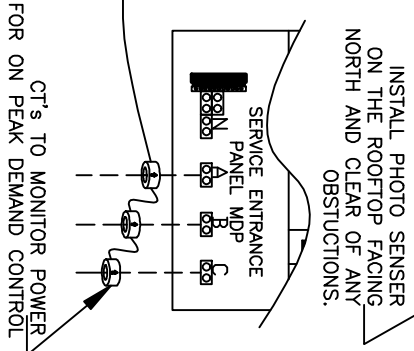
OPTIONAL LINE ITEM
COOLER/FREEZER TEMPERATURE MODULE. MONITORS UP TO 4 COOLER/FREEZER ZONES.

INSTALL MAGNETIC DOOR SWITCH ON COOLER/FREEZER DOOR

OPTIONAL LINE ITEM
COOLER/FREEZER DOOR MODULE. MONITORS UP TO 4 COOLER/FREEZER DOORS.

INSTALL FIELD WIRE TO EXISTING LIGHTING CONTACTOR PANEL

OPTIONAL LINE ITEM
LIGHTING CONTROL MODULE. LIGHTING CONTROLS UP TO 4 LIGHTING ZONES.



CAROLINA PRODUCTS, INC.
1132 PRO AM DR.
CHARLOTTE, NC 28211
PH.(704)364-9029
FX.(704)367-1215



CAROLINA PRODUCTS, INC.
CONTROL AND POWER INTERNATIONAL

THIS DRAWING IS THE PROPERTY OF CAROLINA PRODUCTS, INC. AND MAY NOT BE USED OR REPRODUCED WITHOUT THE WRITTEN CONSENT OF CAROLINA PRODUCTS, INC.

REVISION

CPI-H3000 DETAIL DRAWING

CPI PROJECT #
CPI DRAWING #
SHEET:
DATE:
DRAWN BY: